

1

2

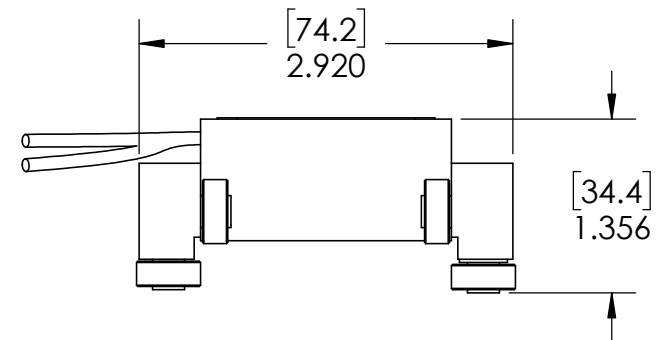
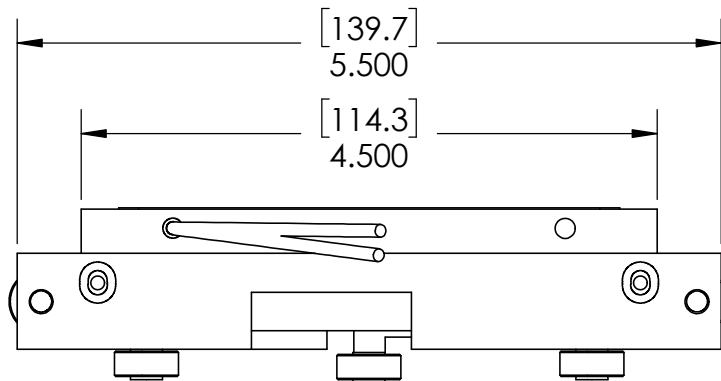
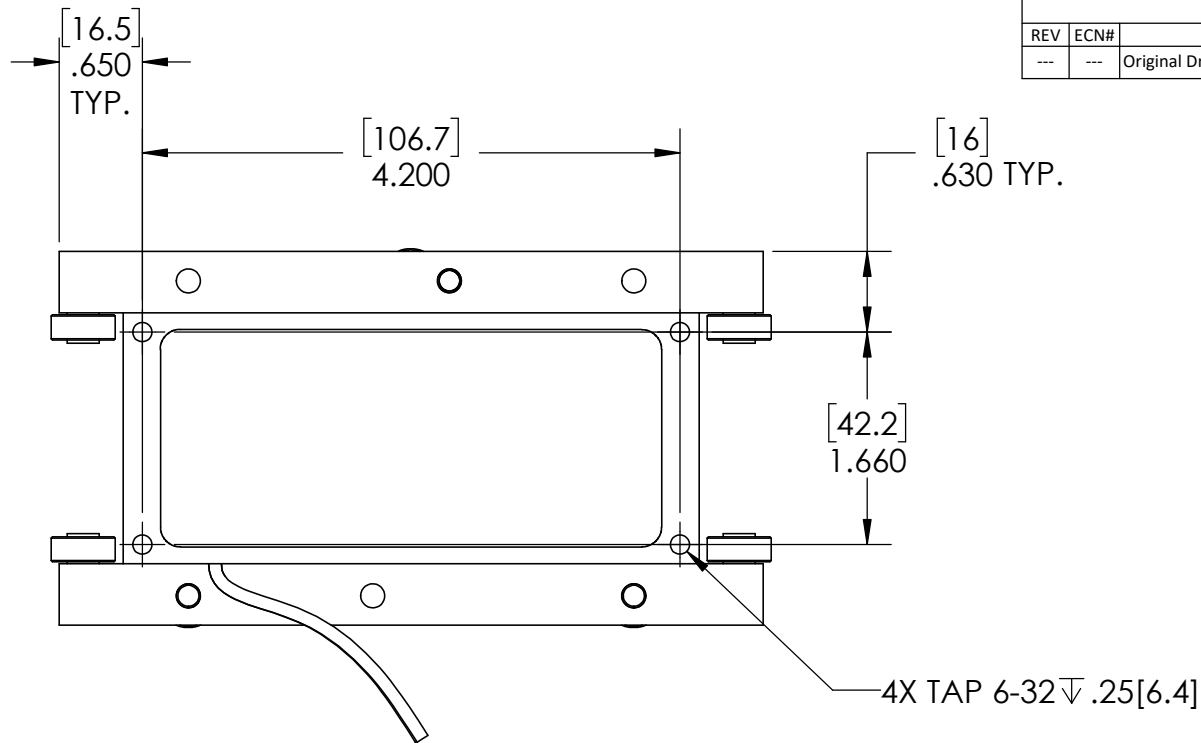
3

4

5

## REVISION TABLE

REV	ECN#	DESCRIPTION	REV BY	APPROVED	DATE
---	---	Original Drawing	LLR	MPW	7-10-18



**H2W Technologies, Inc.**  
 Santa Clarita, CA 91350 USA  
 Tel: (661) 291-1620  
[www.h2wtech.com](http://www.h2wtech.com)

These drawings and specifications are the property of H2W Technologies, Inc. They are issued in confidence and shall not be reproduced, copied, or used without written permission from H2W Technologies, Inc.

UNLESS SPECIFIED OTHERWISE:  
 All dimensions are in inches  
 Standard Tolerances are as follows  
 .XXX ±.005 ANGLES ±.1°  
 .XX ±.010 FILLETS .010  
 .X ±.020 CORNERS .010  
 Remove All Burrs and Sharp Edges

**FOR  
 REFERENCE  
 ONLY**

MATERIAL

FINISH

TITLE

Vacuum Compatible  
 Single Axis Stepper Motor  
**STS-1220-RV**

DWG # **10-0672**

REV

---

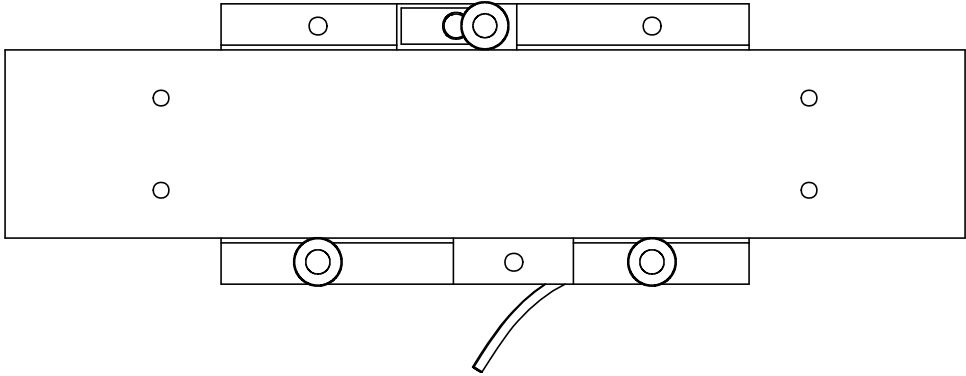
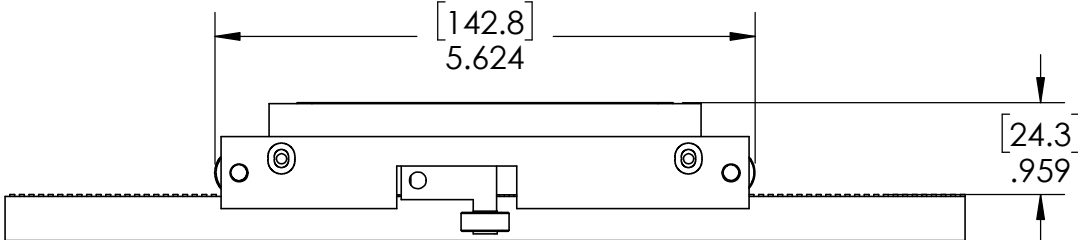
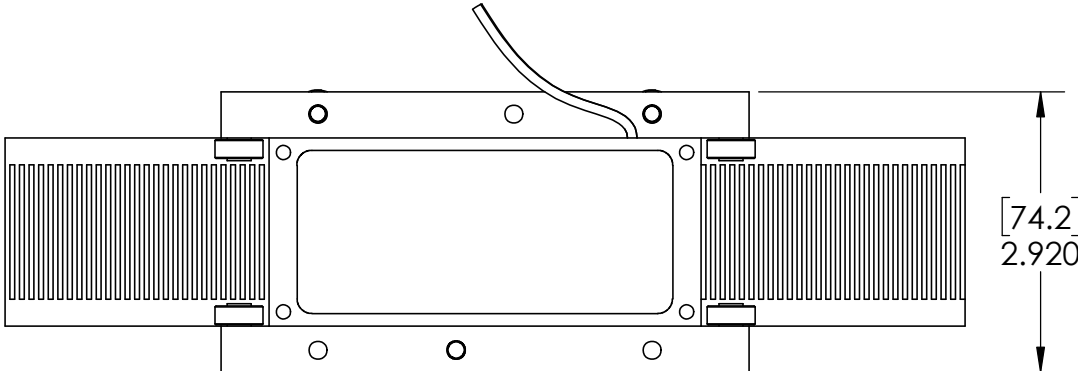
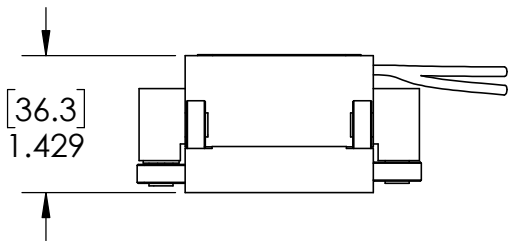
DATE

7-10-18

SHEET

1 of 3

MOTOR SHOWN MOUNTED ON PLATEN



Compatible platen: STP-20-XXX-RV  
XXX represents platen length

1

2

3

4

5

A

A

B

B

C

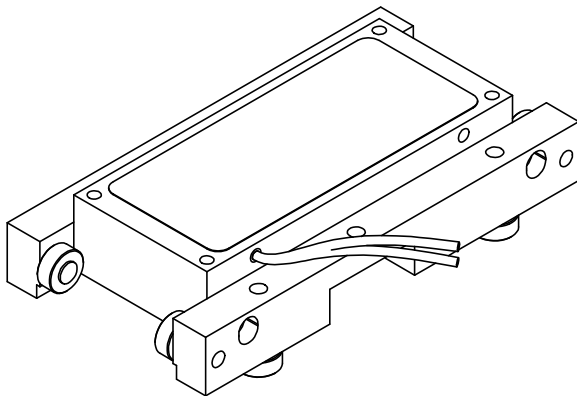
C

D

D

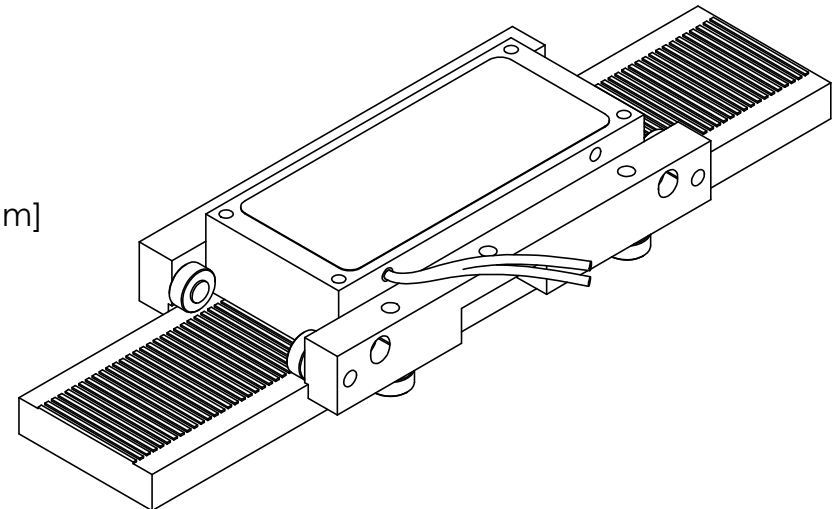
## LINEAR STEPPER MOTOR SPECIFICATIONS

Motor P/N	STS-1220-RV	
Continuous Force	7.15 lbs	31.7 N
Rated Current/Phase	3.0 Amps	
Resistance/Phase @ 20C	1.15 ohms	
Inductance/Phase @ 20C	1.30 mH	
Motor Phases	2	
Bearing Type	Dry Lube Film Coated Roller Bearing	
Nominal Air Gap	0.0015"	
Motor Mass	14.8 oz	419 grams



Dual Lead Length: 7.0in [178mm]

Lead Color	Function
White	A+
White/Blue Stripe	A-
White	B+
White/Blue Stripe	B-



**H2W Technologies, Inc.**  
 Santa Clarita, CA 91350 USA  
 Tel: (661) 291-1620  
[www.h2wtech.com](http://www.h2wtech.com)

These drawings and specifications are the property of H2W Technologies, Inc. They are issued in confidence and shall not be reproduced, copied, or used without written permission from H2W Technologies, Inc.

UNLESS SPECIFIED OTHERWISE:  
 All dimensions are in inches  
 Standard Tolerances are as follows  
 .XXX ±.005 ANGLES ±.1°  
 .XX ±.010 FILLETS .010  
 .X ±.020 CORNERS .010  
 Remove All Burrs and Sharp Edges

**FOR  
 REFERENCE  
 ONLY**

MATERIAL

FINISH

TITLE

Vacuum Compatible  
 Single Axis Stepper Motor  
**STS-1220-RV**

DWG #

**10-0672**

REV

----

DATE

7-10-18

SHEET

3 of 3